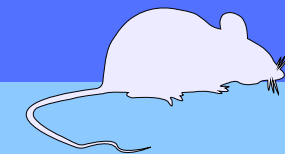


The Scream Of A Dying FOX



PREPARED BY THE RAGBN'S

Minigame:

Can you spot all
the rats on each
page?



THE RAGBN'S



Ashley Johnson:
Director



Nicolas Horvat:
Producer



Gwen Fogden:
Lighting



Benjamin Watts:
DOP



ruby summers:
sound designer



what is the idea

AJ

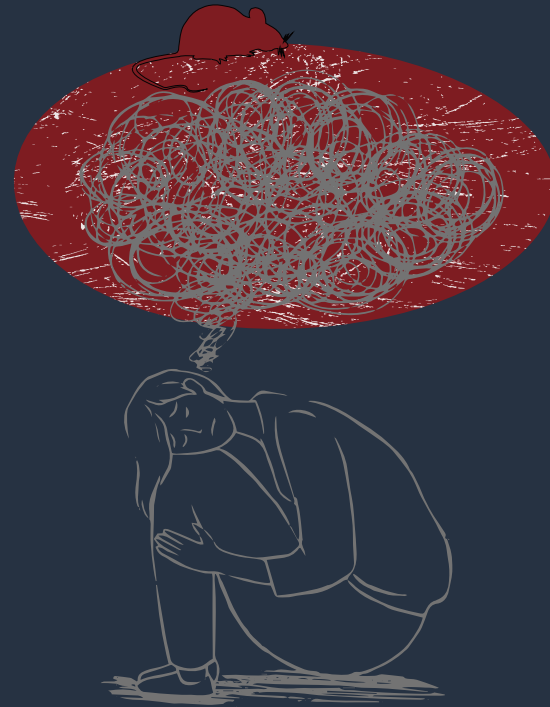
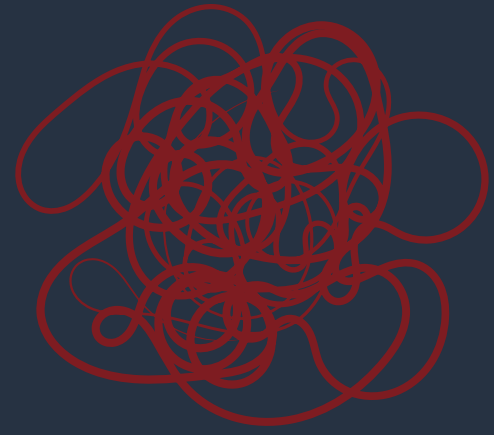
The story starts as a normal date but over time the date goes horribly wrong and the film starts to feel more sci-fi. But by the end of the film its insinuated that the events that have happened throughout the film are in an old mans head that imagined what his life would have been with the events that happened earlier in his life.

the film is about a man who wishes he had a better life and this story is imagined in his head , the character try to fantasies what his girlfriend would do and what she would look like , you see how the characters change over time and how he tries to forget about his trauma but it always comes back to bite him in some sort of way.



NH

WHAT ARE THE MAIN THEMES OF THE STORY



THE **MAIN THEMES** THAT WILL BE INCLUDED IN THE SHORT FILM ARE SIGNS OF DEALING WITH **DEEP DEPRESSION, ANXIETY, MANIA AND PTSD AND LONELINESS** AS THE MAIN CHARACTER HAS BEEN THROUGH A LOT IN HIS LIFE AND IS STILL NOT HEALED FROM HIS CHILDHOOD STRUGGLES.

The theme of loneliness

AJ

in the film

The main character in the film is an elderly man who has missed out in an opportunity of love and how that has effected him in his life.



76% of adults (including those who did and did not feel lonely) agreed that “people often feel ashamed or embarrassed about feeling lonely” (Mental Health Foundation, 2022).



Market research

Shot Sizes and Camera Angles:

- Close-up, for intensity in a character
- Medium Close-up
- Tracking Shots
- Low angle
- Dutch angle, to show emotion
- Panning shots
- Push In for drama
- Pull out for intensity

Lighting:

The colour scene of the lights change depending the location of the background and the emotion of the scene

Girl, Interrupted

shows a darker side of mental hospitals and their patients



Lighting: With some scenes it's all based white and pale colours



recovery from an eating disorder, Anorexia Nervosa

To the bone



Lighting:

At the doctors she has bright lighting but once on her own it's more dark and gloom. With bright colours to dark colour.



Im thinking of ending things



a point of madness, with dreaming up this fantasy world in order to cope with the lack of relationships in his life.



EXC FOREST .MID DAY RAINY .FOREST MONOLOG SCENE

we fade into the scene at mid day in a overrun forest full of water and mud , the rain and leaves over powering the surrounding sounds making it hard to hear anything but the forest. Calm music starts to play as we hear a older man prepare himself for something.

ALEX

The Forest are unknown landscapes that fill the world around use , there like mazes to be explored and get lost in, Foreign regions that have consequence for invading.

The camera moves around the forest as Alex is monologing about the forest.

ALEX

You look at a tree and wonder if its the same tree you saw before going insane as your thoughts get drowned in the sounds of trees crashing together by the roaring wind.

We get a view of the trees and sky from a low angle to show the height of the trees.

ALEX

I never been able to get this sound out of my head , every time I see a forest it always reminds me of

we then cut to the title of the film where we still hear the trees and wind

THE SCREAM OF A DYING FOX



This is an idea of where we would like to film and show some scenes.



a forest and a pub so far..

Audience research

We have decided to make questionair to ask the class about loss. Having a look at the responses, we have decided use these to an advantage to make our shot film improved and not having things like: bad endings, bad story telling that do not relate to the target audience.



How do you think we can show loss in film?

7 responses

Maybe with metaphors

Isolation, colour theory, camera framing, acting

colour scheme, drastic change in character/character arc

Lonely wide-shots of a single character

a love one dying

Sad, lonley music, character being on their own

We can show it in many ways such as showing loss by losing a family member or someone close to you or by losing your own self and losing your confidence

What do you not like in films?

6 responses

Long dragging conversation shots

Exposition, bad camera work, bad editing, bad audio

Bad endings

bad story telling

Gory blood

When the storyline isn't good and is all over the place with bad character development and not any explained details

What Is Our Unique Selling Point?

Our short film is unique from others as this focusses on a man wanting a better life, opposed to the usual student short films of having an antagonist. This is about personal mental aspects, lonely characters and a fantasy about his girlfriend. This will surely stand out from other short films in this class as this is very mentally dramatic and character focussed.

The entire story in His head makes it stand out further, as it is a unique premise.

BW



NH

CHARACTERS THAT WE NEED

WE NEED ONE GIRL
TO PLAY THE GUYS
DATE/ GIRLFRIEND
THAT IS IN HIS MIND

WE NEED A GROWN MAN TO
PLAY AN UNCLE OR
ANOTHER FAMILY MEMBER
THAT ABUSED THE MAIN
CHARACTER WHEN HE WAS
YOUNGER

WE NEED A GUY TO
BE THE MAIN
CHARACTER



People i would cast for the film



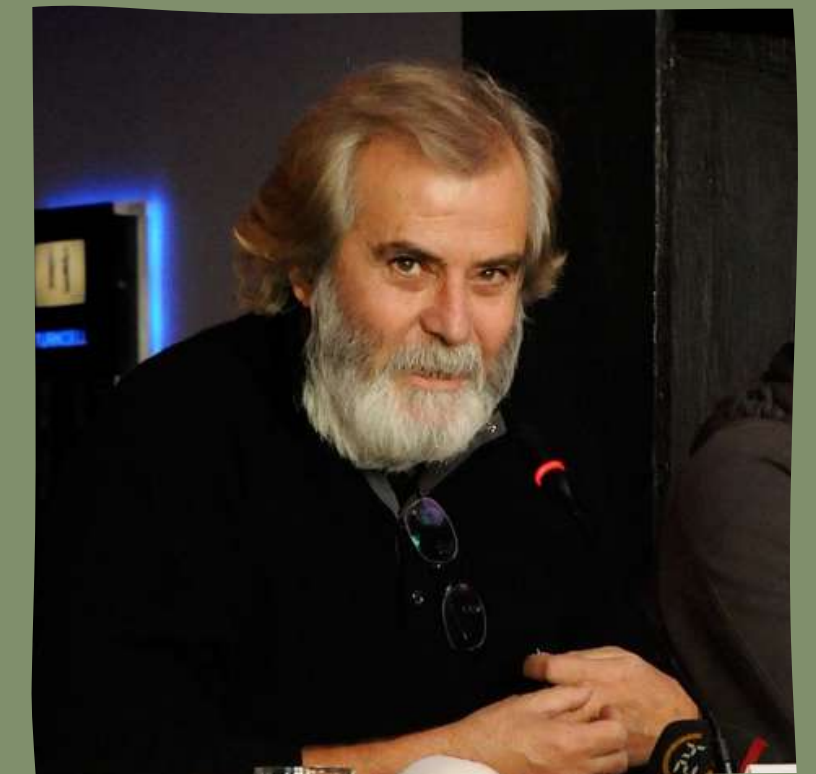
*these are some of the people
i would love have in the film.
All these actors are really
good at what they do.*



*with these actor i feel like they
could pull of doing a serious
role for the film.*



*for the first pick would
probably choose Jessie
Buckley for the main lead as
she is a very diverse actress
that is able to pull of hard and
thought provoking roles*



Legal and Ethical Considerations

In this shoot we have to make sure we have to keep an eye out and consider the legal and ethical situations. We need to make sure we get permission to shoot in a set location, like the pub and incase the forest is private property to avoid any legal complications; this includes considering the legality of copyright in the background music that could appear in the pub aswell as potential copyrightable scenes from other places.

Aside from those Legal considerations, we must also think about the ethical side, like how to portray the message we are doing in a calm and respectful manor, so people relating and facing the same problems we are talking about don't get offended.

And primarily in the production we finally have to think about the correct age rating of our film. Making sure the age rating is not too low with the message and scenes we are portraying in the short film.

The Kit and Shots

Our film will have a variety of shots, ranging from wide-angle shots for exposition to close-up for drama. Shots like these require a variety of different types of kit to get them done.

These include:



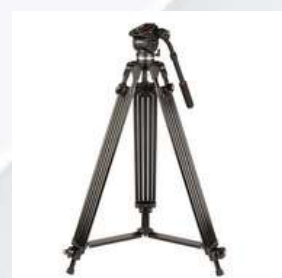
Your classic camera



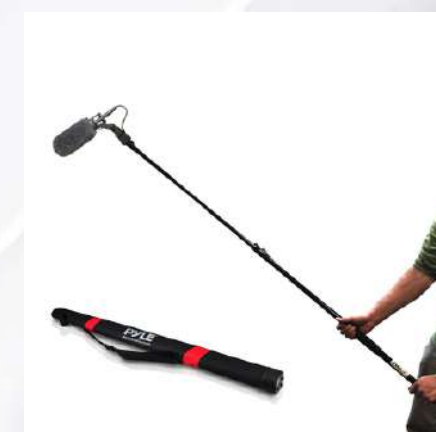
Dolly



Sound Recording



The Usual Tri-pod



boom mic

LED lights and Tri-Pod



Shoulder-Rig

Thank you!!!!

Ragbn's Pitch slides

